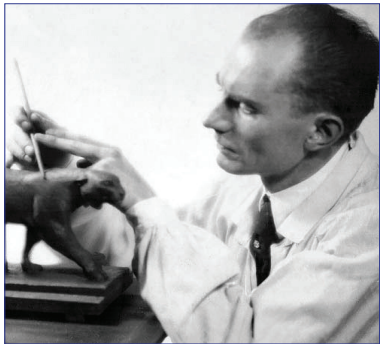


Armand PETERSEN (1891-1969)



***ANTILOPE DOS ROND* (1928)**

Bronze, richly dark brown patina

*H : 21,1 cm, L : 19,1 cm, D : 7,9 cm*

Lifetime cast signed "A.Petersen", artist edition  
without foundry mark (sand cast).

**Circa 1928-1940**

Among the fifteen artists who carry out the renewal of animal sculpture in the first third of the twentieth century, Petersen is one of those whose corpus animalier is the most built but also the most restricted in production. There are several reasons for this, including his background, age and career choice.

The sculptor, of Danish origin, was born in 1891 in Basel, Switzerland, where he began his career in 1923 with the *Chien Rex*, his first work. The following year, he moved to Paris where, completely unknown despite a first trip before 1914, he was quickly integrated by the new animal school that already radiates in the world (Bugatti, Pompon, Sandoz ...). The sculptor then meets young artists already very active as Becquerel, Guyot and Godchaux.

In the Roaring Twenties, although he was not French – a serious handicap during the inter-war period – Petersen nevertheless produced his most important models. Exhibiting in many salons where the critics are always favorable, it is a few collectors and decorators who buy his first bronzes, as Leleu and Ruhlmann.

Then, in the early 40's, more than others as a foreigner, he suffered from the Great Depression which considerably curbs the Art market as a whole. Only the ceramics produced in Denmark allow it to survive. These reasons, as well as his shy and reserved temperament, explain the rarity of his bronzes on the market.

The both models are designed over the period 1927-1930: the *Antilope dos rond* and the *Jeune Antilope Kob*. And, they are known respectively in few examples, which confirms the confidential character of its production.

